



### RENTAL RATE SHEET

#### Main Hall—Maximum Occupancy: 170PPL with Dance Floor

**Price Includes** Rectangular tables & chairs, lights, restrooms, access to ice machine and free parking. Kitchen only available with approval.

Weekday Rates (Mon-Thurs) 8am-3pm	Weekend Rates (Fri & Sat) 8am - 11pm
\$75/hr minimum 4hr rental	\$75/hr minimum 4hr rental

#### Meeting Room and/or Pavilion—Maximum Occupancy Each: 50PPL

**Price Includes** Restrooms located in Pavilion Building, rectangular tables & chairs (meeting room), picnic tables (pavilion), lights, access to ice machine and free parking. Kitchen only available with approval.

#### Patriot’s Grill—Maximum Occupancy: 30 PPL

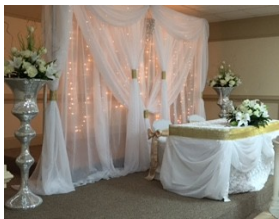
**Price Includes** restrooms, tables and chairs, lights and free parking.

Meeting Room	Pavilion	Patriots Grill
\$30/hr minimum 4hr rental	\$30/hr minimum 4hr rental	\$30/hr minimum 4hr rental

<b>Meeting Room &amp; Pavilion</b>	\$55/hr minimum 4hr rental	
------------------------------------	----------------------------	--

#### Parking Lot—Specify Area Front, Back, Eastside or Westside

Rates for One (1) Area (No Sunday Rental)
\$25/hr minimum 4hr rental



**Price Includes** access to restrooms located in Pavilion. No Electric Available.

#### Additional Charges for Room Setup (Outside Scope of Rental)

Check with Event Coordinator for Prices

#### **Liquor List Must be Submitted To Event Coordinator 30 Days Before Scheduled Event**

**Bartender Charges:** 1 Bartender x 100 people \$100.00/4 Hours  
 Add: 1 Bartender x 101-175 people \$100.00/4 Hours  
 \$25.00 Each Additional Hour Per Bartender after 4 Hours

**All Rentals Require: (1) \$500.00 Refundable Security Deposit, (2) \$150.00 Refundable Cleaning Fee, (3) Proof of \$1,000,000 Event Liability Insurance, (4) Proof of Liquor Liability Insurance if Alcohol Event. (5) Covid -19 awareness waiver**

**ALL Rental Rates are BASE RATES.** Additional charges may be assigned depending on size and type of event. These charges may include bar charges, security, Post employee support, etc.